



iSTEP



innovative, intuitive, intelligent

MULTIPHASE MOTOR PUMP FOR SOPHISTICATED DOSING TASKS

sera iSTEP®

The new **sera** dosing pump iSTEP® combines an intelligent drive concept with the accuracy of a diaphragm pump. It sets new standards in terms of reproducibility and reliability.

Performance range: 0,02 .. 50 l/h at 10 .. 3 bar
Adjustment range: 1:1000

FIELDS OF APPLICATION

Due to the variable speed adjustment the possible applications are almost unlimited. It is intuitive to use, durable and particularly suitable for ambitious dosing tasks.

EXAMPLES OF APPLICATIONS

- Dosing of chlorine for drinking water treatment
- Dosing of precipitants for waste water treatment
- Dosing of polymer
- and many more

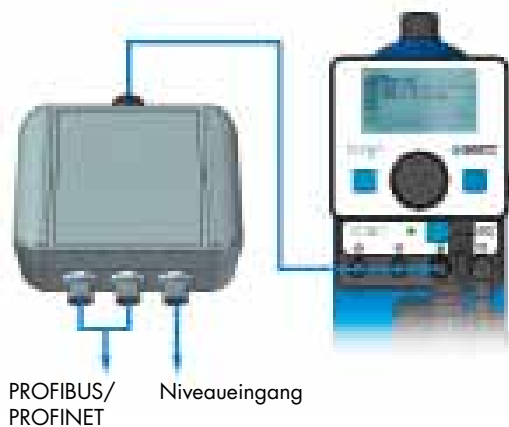
ADVANTAGES AT A GLANCE

- Extremely wide performance range with only one pump
- Adjustment range 1:1000, thus optimally adaptable
- Low pulsation dosage
- Drive controlled by microprocessor
- Flexible remote control
- Slow mode for viscous media
- Energy-efficient drive technology
(annual energy consumption lower 100 €)
- Batch dosing with recipe memory
- Intuitive menu navigation incl. parameterization
- Pulse division or multiplication
- Weekly/daily timer operation with 10 program memories
- 9 languages for the menu (de, en, es, fr, nl, cs, fi, tr, sv)
- Certified accord. to UL/CSA and TR



ADDITIONAL FEATURES

- Removable graphic display with back light
 - Visualisation of operating modes incl. service information by colour display
 - Only one product for a wide power range
 - Used world wide thanks to a various range of power plugs
 - SD-card slot
 - USB adapter (8-pole, M12)
-
- 3 inputs
 - 3x programmable as digital inputs or
 - 2x programmable as analogue inputs 0/4...20mA
 - 2 digital outputs
 - 1 analogue output for 0/4...20mA signal
 - All inputs are freely programmable



TRANSFER OF THE PARAMETERIZATION

- Fast commissioning of several pumps with same function
- Parameterization of the pumps with only one operating unit

The parametrization of the pump is stored in the operating unit. Subsequently the operating unit can be connected to further pumps and the stored parameters can be transferred.



INTERFACE MODULE

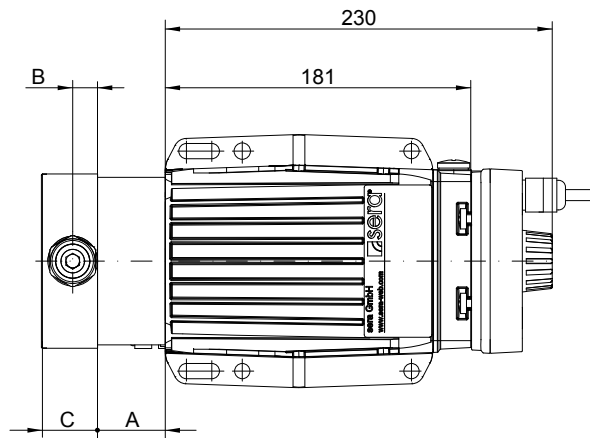
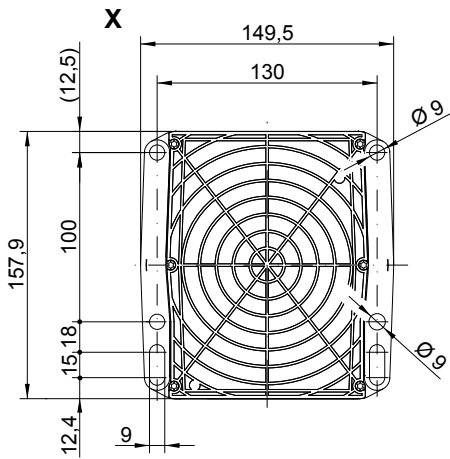
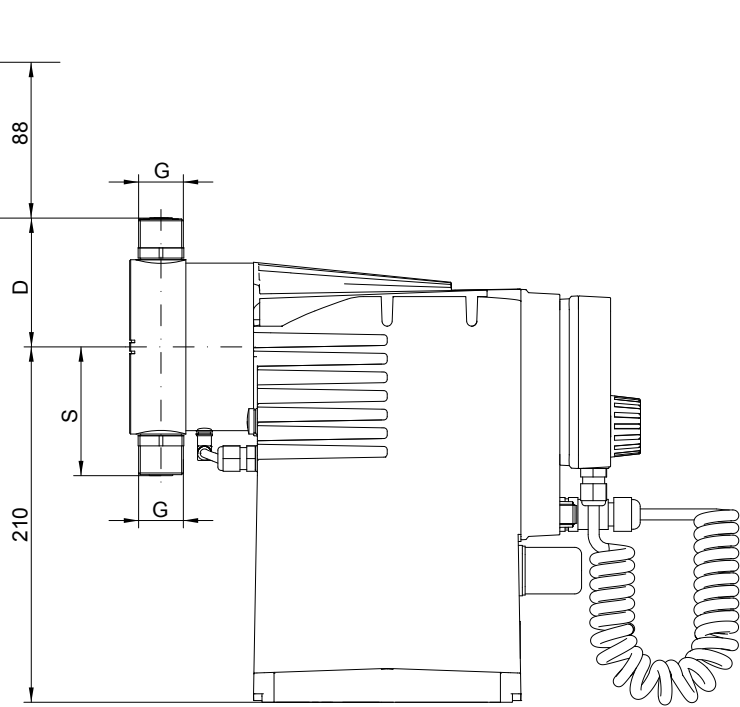
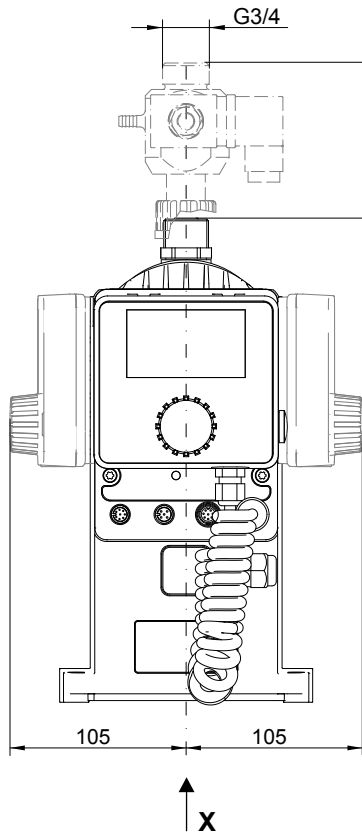
The control electronics of the iSTEP® can be extended via an Interface module. It consists of a level input and 2 connections for PROFIBUS/ PROFINET, whereby the iSTEP® can be directly connected to a bus system.



OPERATING WITHOUT OPERATING UNIT

Every iSTEP® dosing pump can be used without operating unit, if the parameters have been read once. Also the dosing pump can be used without the operating unit via START/STOP buttons at the housing of the iSTEP®.

DIMENSIONS

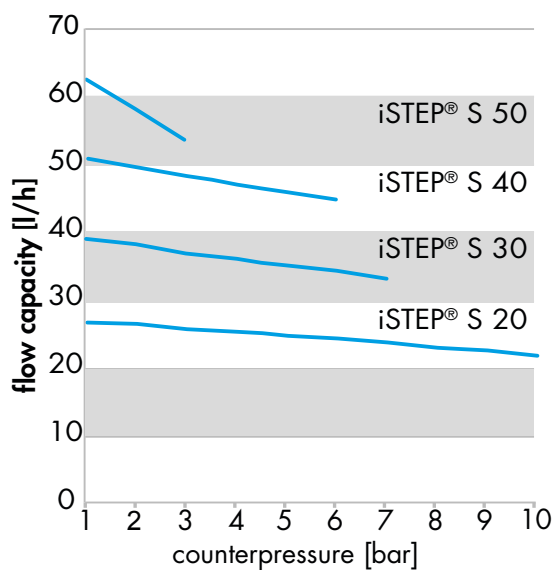


OPERATING INSTRUCTIONS

All dimensions in mm!

			iSTEP® S 20	iSTEP® S 30	iSTEP® S 40	iSTEP® S 50
Valves	S	Double valves PVC	65	72	72	75,1
		Double valves PP-FRP/ PVDF-FRP	56,6	69,6	69,6	76,1
		Double valves 1.4571	65	72	72	75,5
	D	Double valves PVC	65	72	72	75,1
		Double valves PP-FRP/ PVDF-FRP	64,6	69,6	69,6	76,1
		Double valves 1.4571	65	72	72	75,5
	G	Connection thread Suction/pressure valve	G3/4	G3/4	G3/4	G3/4
	DN	Nominal weight	5	5	5	8
	Assembly pump	A	Assembly pump	37,5	40	40
Pump body (PB)	B	Centre of valve thread PB PVC	16	14,7	14,7	14,7
		Centre of valve thread PB PP-FRP/ PVDF-FRP	17	14,7	14,7	14,7
		Centre of valve thread PB 1.4571	16	14,7	14,7	14,7
	C	PB PVC	38	40,3	40,3	39,3
		PB PP-FRP/ PVDF-FRP	35	33,2	33,2	33,2
		PB 1.4571	36	38,2	38,2	37,2

FLOW CAPACITY



TECHNICAL DATA



Pump data

Type	Maximum permissible pressure at the pump outlet $P_{2 \text{ max.}}$ bar	Nominal capacity ⁽¹⁾ Q_N at $P_{2 \text{ max.}}$		Suction height max. mWC	Permissible pressure at the pump inlet min./max. bar	Recommended nominal diameter of the connecting pipes DN	Nominal stroke frequency 50 Hz/60 Hz 1/min	Weight (plastic/stainless steel) approx kg
		50 Hz/60 Hz l/h	ml/stroke					
iSTEP® S 20	10	20	1,75	3	-0,3/0,5	5	190	6,1 / 7
iSTEP® S 30	7	30	3,33	3	-0,3/0,5	5	150	6,1 / 7
iSTEP® S 40	6	40	3,51	3	-0,3/0,5	5	190	6,1 / 7
iSTEP® S 50	3	50	4,39	3	-0,3/0,5	8	190	6,3 / 7,2

Electrical connection data

Type	Power consumption W	Frequency Hz	Voltage 50 Hz/60 Hz V ~ 1	Rated current (50 Hz/60 Hz)		Insulation class ISO	Recommended fuse
				230 V A	115 V A		
iSTEP® S ..	75	50/60	100 - 240V	1,2	2	F	C10A

Local sera contact:



Alfsen og Gunderson AS
 Brynsveien 5, 0677 Oslo
 Telefon +47 22 70 77 98
www.ag.no

sera ProDos GmbH

sera-Str. 1
 34376 Immenhausen
 Germany
 Tel. +49 5673 999 02
 Fax +49 5673 999 03
info-prodos@sera-web.com
www.sera-web.com